

America

Brother Bear

Intro Am Bm/f# Em G Am Bm/f# G



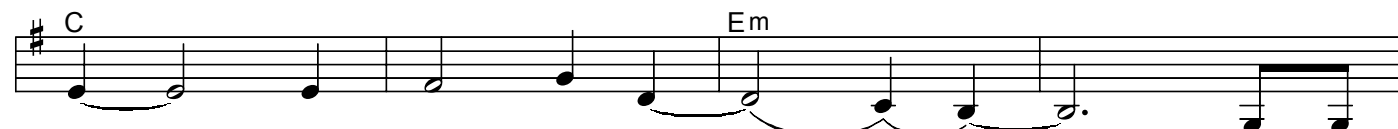
Verse



1. Eve - ry day I see these peo - - - ple as I
 2. So much sin, so much e - - - vil. My heart
 3. Oh, my friend, don't be a cow - - - ard. Call on
 4. I love you, dear A - mer - i - ca, and if you'll



tra - vel a - long the way. some look
 cries for these blind peo - ple. They think they
 God this ve - - - ry hour. Find a
 list - en to what I say, You'll see the



hap - py, some look sad, but their
 see the true re - al - - - i - ty, but they're
 place of qui - et sol - - - i - tude, a -
 light, you'll know what liv - ing's for; You



eyes cry out, "I don't know the light.
 oh, so blind. A -
 lone with God, let Him do His work with - in.
 don't know all the peace you've left be - hind! You'll



Hide the guilt, let's try to look real nice."
 mer - i - ca, I pray for you.
 One by one, by one, con - fess your sin.
 laugh and say, "My God, what joy is mine!"

to chorus

Chorus

Musical staff with treble clef and key signature of one sharp (F#). The melody consists of quarter and eighth notes. Chords G, D, and C are indicated above the staff.

A - mer - i - ca, come back to God!_____

Musical staff with treble clef and key signature of one sharp (F#). The melody continues with quarter and eighth notes. Chords G, D, and C are indicated above the staff.

Land of the free, be set free!

Musical staff with treble clef and key signature of one sharp (F#). The melody continues with quarter and eighth notes. Chords G, D, C, and G are indicated above the staff.

A - mer - i - ca, when will you fall on your knees,

Musical staff with treble clef and key signature of one sharp (F#). The melody concludes with a double bar line and repeat sign. Chords Am, C, and G are indicated above the staff. The text "last time to Coda" is written above the final measure.

and cry for God to let you see!

Coda

Musical staff with treble clef and key signature of one sharp (F#). The coda melody begins with quarter notes. Chords D, C, G, D, and C are indicated above the staff.

Musical staff with treble clef and key signature of one sharp (F#). The coda melody continues with quarter notes. Chords G, D, C, G, and Am are indicated above the staff.

And cry for

Musical staff with treble clef and key signature of one sharp (F#). The coda melody continues with quarter notes. Chords C, G, Am, and C are indicated above the staff.

God to let you see. And cry for God to let you see.

Musical staff with treble clef and key signature of one sharp (F#). The coda melody concludes with a double bar line. Chords G, Am, Bm/f#, and Em are indicated above the staff.